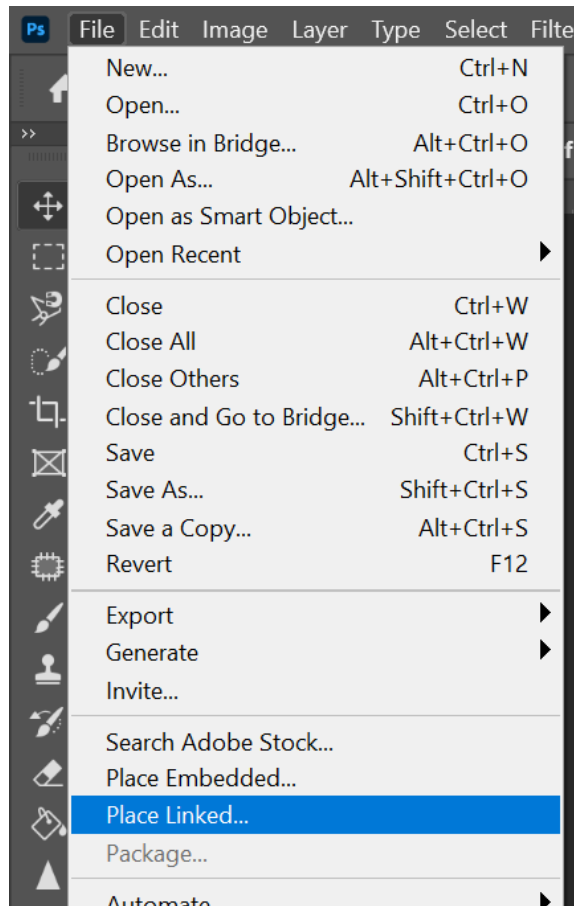
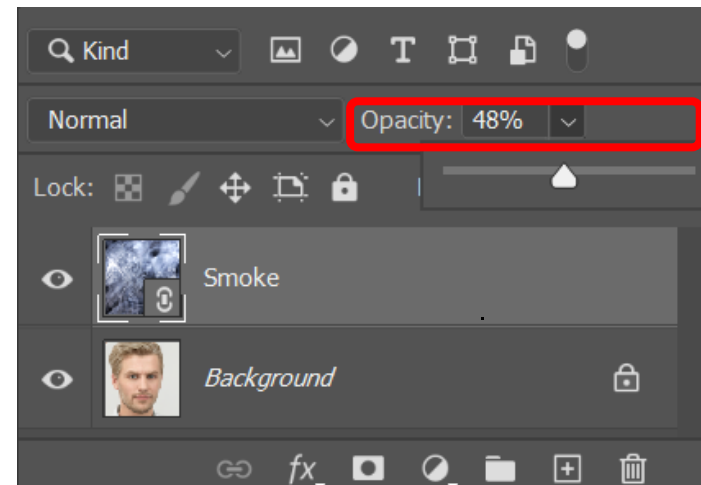


#28 Opacity tool

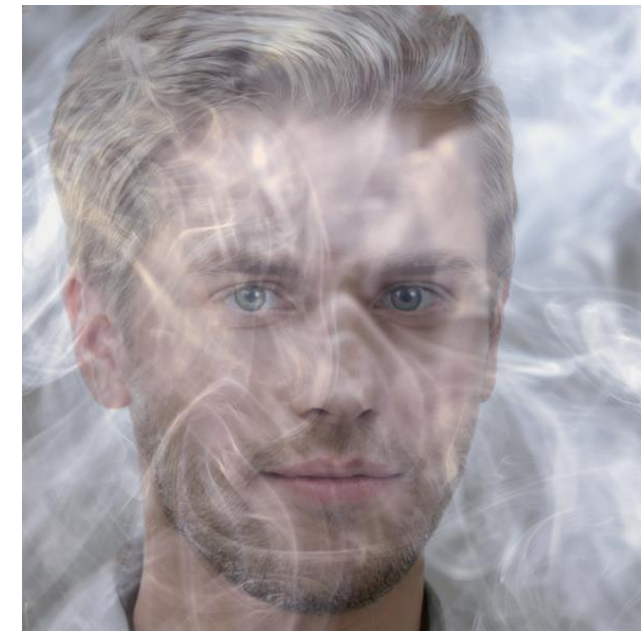
Step 1: Open the AI face and use file and place linked to add the smoke background.



Step 2: Make sure the smoke image is the top layer and reduce the opacity level.



Step 3: Adjust the opacity to a level you're happy with. In this example, just to make it appear the person is in the smoke



Guidance

This tool is available in older versions of Photoshop and Photopea.

